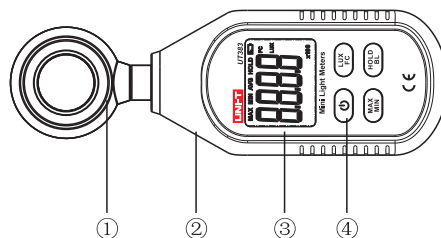


UT383

Mini Light Meters

Operating Instruction



1. Introduction

UT383 is a stable, safe, reliable mini digital light meter, widely used in lightening enterprises, agriculture and animal husbandry, mining enterprises, laboratory, office, household, street lights construction and others.

This operating manual includes relevant safety information and warnings. Please read this manual carefully and observe all the cautions strictly.

⚠ Warning:

Before using the product, please read the operation safety rules carefully.

2. Out of the Box

Open the packing box and take out the meter. Please check carefully if any items are missing or damaged.

1. Main Unit-----1
2. Operating manual ----- 1

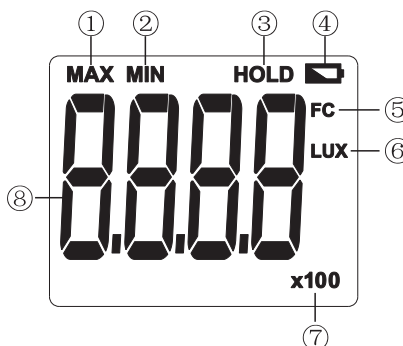
3. Operation Safety

1. Please check the meter and the accessories before using and beware of any damage or abnormal phenomenon. If you find the case is damaged or the LCD shows nothing, or you consider that the meter could not work properly anymore, please stop using it.
2. Observe the operating instructions while measuring.
3. Do not open the meter at will or change internal wiring to avoid damages to the meter.
4. When the LCD displays "FC", replace the battery timely. Remove the battery if the meter is not used for a long time.
5. Do not store or use the meter in high temperature, high humidity, flammable, combustible, or strong electromagnetic environment.
6. Please use soft cloth and neutral detergent to clean the case for maintenance. Do not use grinding agent and solvent to avoid case corrosion and damaging the meter.

4. Product Outlook

1. Illumination transducer
2. Meter case
3. LCD display
4. Function keys

5. Display Interface



1	Maximum measurement	5	Foot candle
2	Minimum measurement	6	Lux
3	Data hold	7	Value*10 or value*100
4	Low battery	8	Illumination value

6. Key Function and Setup

1. ON/OFF:
 - Short press once to start up; short press again to power off.
 - Note: Product's auto power off feature can be disabled: Press and hold "HOLD" and then press "ON/OFF" key to enable/disable auto power off, LCD will display "APO OFF" to indicate status.
2. LUX/FC:
 - Unit conversion key: Short press this key to select Lux or Foot candles.
3. MAX/MIN:
 - Pressing this key can select maximum, minimum or normal value measurement; select maximum and the meter will always show the maximum reading; select minimum and the meter will always show the minimum reading.
4. HOLD/BL:
 - HOLD: Short press this key to hold measurement; short press this key again to exit data hold and continue normal measurement.
 - BL: Long press this key to turn on backlight; long press this key again to turn off backlight.

7. Technical Specifications

1. Illumination

Function	Range	Resolution	Accuracy	Description
Illumination	0~9999 Lux	1 Lux	$\pm(4\%rdg + 8dgts)$	(regulate in the standard of 2856K color temperature flat lamp) Note: 1FC=10.76 Lux
	≥ 10000 Lux	10 Lux	$\pm(5\%rdg + 10dgts)$	
Range	0~199,999 Lux			Auto-ranging
Sampling Time			0.5s	Refresh sampling in 0.5s
Overload Indication			OL	Shows "OL"
MAX/MIN Measurement			MAX/MIN	Shows "MAX/MIN"
Data Hold			HOLD	Shows "HOLD"
Backlight			BL	Manually on and off
Auto Power Off			5mins	Automatically power off after 5mins without operation
Low Battery			3.0~3.5V	Shows low battery prompt when power is 3.0~3.5V

2. General Type

- LCD: 4 digits LCD display. The max display is 9999
- Overload indication: When illumination is over 199,999 Lux, "OL" will be displayed
- Battery low power display: Prompt "▣". New battery should be replaced in time
- Sampling rate: 2/s
- Sensor type: Silicon photocell
- Impact strength: Can withstand the impact of landing from 1 meter height
- Battery requirement: 1.5V batteries (AAA) x3
- Product size: 160×50×28mm
- Weight: 118g

3. Environment Specification

- Indoor use
- Altitude height: 2000m
- Safety: EN61326-1
- Pollution level: 2
- Working temperature and humidity:
0°C~40°C (not greater than 80%RH)
40°C~50°C (not greater than 45%RH)
- Storage temperature and humidity:
-20°C~60°C (not greater than 75%RH)

4. Electrical Specifications

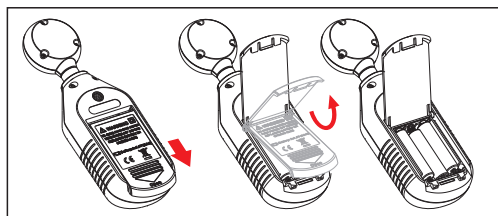
- Accuracy: 0~9999Lux, $\pm(4\%rdg + 8dgts)$
 ≥ 10000 Lux, $\pm(5\%rdg + 8dgts)$
- Environment temperature: 23°C±3°C
- Environment humidity: $\leq 80\%$ RH

5. General Maintenance

- ⚠ Warning:** please do not open the case of meter to avoid affecting device accuracy or damage to the meter.
- Maintenance and service of the meter should be accomplished by professional personnel or designated maintenance department.
 - Clean the case by dry cloth periodically, detergent with abrasive or solvent composition shall not be used.

6. Battery Installation and Replacement

- The meter uses 3 pieces of AAA 1.5V batteries. Please see figure below for steps of battery installation and replacement.



UNI-T

UNI-TREND TECHNOLOGY (CHINA) CO., LTD.

No6, Gong Ye Bei 1st Road,
Songshan Lake National High-Tech Industrial
Development Zone, Dongguan City,
Guangdong Province, China
Tel: (86-769) 8572 3888
<http://www.uni-trend.com>